

$$2x + 3y = 18$$

Rewrite in slope-intercept form

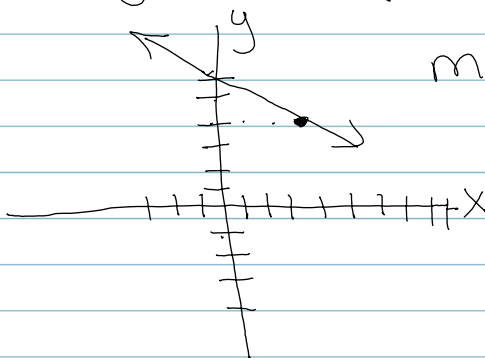
$$\frac{3y}{3} = \frac{-2x + 18}{3}$$

$$y = -\frac{2}{3}x + 6$$

Find the slope $m = -\frac{2}{3}$

Find the y-intercept $(0, 6)$

Graph:



$$m = \frac{\text{Rise}}{\text{Run}} = \frac{-2}{3}$$

down 2
Rt 3

$$x = 4$$

Graph

$x = \#$
(vertical line)

